

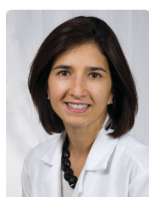


# *Applying for* Our Residency



## Application Deadline: January 2, 2019

Applicants must submit through PhORCAS a personal statement, pharmacy transcripts, three letters of recommendation and a curriculum vitae. An on-site interview also is required. Please contact one of us if you are interested in the program or have any questions regarding the residency.



### **Laura Veltri Hamann, PharmD, BCPS**

Residency Program Director  
Dept. of Pharmacy  
Missouri Baptist Medical Center  
3015 North Ballas Road  
Saint Louis, Missouri 63131  
Phone: 314-996-5881  
Fax: 314-996-5309  
Laura.Hamann@bjc.org



### **Thomas G. Hall, PharmD, BCPS, FASHP**

Director of Pharmacy Services  
Dept. of Pharmacy  
Missouri Baptist Medical Center  
3015 North Ballas Road  
Saint Louis, Missouri 63131  
Phone: 314-996-5125  
Fax: 314-996-6947  
Thomas.Hall@bjc.org



**Missouri Baptist**  
MEDICAL CENTER

**BJC** HealthCare

3015 North Ballas Road • Saint Louis, Missouri 63131 • 314-996-5000 • [MissouriBaptist.org](http://MissouriBaptist.org)



# *Resident* Salary and Benefits

## Salary

\$47,476

## Health and Dental Insurance

Residents are eligible for enrollment in group health insurance. Coverage starts after the first 30 days of employment.

## Life Insurance

The hospital provides term life insurance at one times the annual salary at no cost to the resident.

## Educational Leave

A maximum of seven days will be authorized for travel to meetings.

## Paid Time Off

A total of 15 days of paid time off (Paid Time Off or PTO) is provided. These days are used for holidays, vacation days, and the first three days of any extended episode of illness. Hours will accumulate in the extended illness bank beginning on the first day of employment. A total of eight days per year will accumulate.

## Authorized Absence

Up to six days will be allowed to travel for job interviews. This absence must be approved by a rotation preceptor.

## Holidays

The six annual holidays are Christmas, New Year's Day, Memorial Day, Independence Day, Labor Day and Thanksgiving. The resident will be scheduled to work only one holiday.

## Support Services

Residents have privileges at the medical library. Office space, copying privileges, and access to personal computers and the Internet are available. Free parking also is provided.

## Licensure

Residents must be licensed by the Missouri Board of Pharmacy.



**Missouri Baptist**  
MEDICAL CENTER

**BJC** HealthCare

3015 North Ballas Road • Saint Louis, Missouri 63131 • 314-996-5000 • [MissouriBaptist.org](http://MissouriBaptist.org)



# Resident Activities

**R**esidents participate in a variety of educational and service activities throughout the year.

## Residency Project

The resident is responsible for conceiving, devising and conducting a project during the year. The project will be completed under the guidance of one of the residency preceptors.

## Pharmacy Journal Club

Residents will present and discuss current articles of interest at two journal club meetings and two formal resident cases.

## Pharmacy Continuing Education

The resident will present one continuing education program.

## Teaching Responsibilities

The resident will participate in a didactic teaching workshop arranged through the college and participate in developing a teaching activity associated with the workshop.

## Resident Seminar

The resident will present a formal seminar to the St. Louis metropolitan area residents. Assistance and guidelines for seminar presentation will be provided.

## Conferences

A variety of conferences is available at Missouri Baptist Medical Center. These include medicine Grand Rounds and numerous specialty conferences.

## Service Commitment

The resident will provide staffing to the department by working two four-hour evening shifts a week (no weekends).



## Travel

The residents may attend a clinical meeting during the year and possibly the Midwest Pharmacy Residents Conference.

## Advanced Cardiac Life Support

Residents will complete advanced cardiac life support (ACLS) and should have current basic life support (BLS) certification prior to taking ACLS.



**Missouri Baptist**  
MEDICAL CENTER

**BJC** HealthCare

3015 North Ballas Road • Saint Louis, Missouri 63131 • 314-996-5000 • [MissouriBaptist.org](http://MissouriBaptist.org)



# Residency Learning Sites

## Cardiovascular Recovery

Patients cared for in this unit include those who have received coronary bypass surgery, heart valve replacements and aneurysm repair. Under the guidance of the preceptor, the resident will provide pharmaceutical care to the patients and drug information to the team.

## Cardiology

The resident will round with a cardiology team on patients in the advanced cardiac care unit. Under the guidance of a preceptor, the resident will provide care for patients with complex cardiac disease states such as acute coronary syndromes, heart failure, and atrial and ventricular arrhythmias. The resident will also assist in precepting PharmD students.

## Internal Medicine

The resident will attend rounds with a hospitalist who cares for patients with a variety of disease states. Under the guidance of the preceptor, the resident will provide drug information to the team and pharmaceutical care to the team's patients. The resident also will assist in precepting PharmD students.

## Surgical and Medical Intensive Care Units

The intensive care units consist of two units with a total of 20 beds. The resident will attend rounds in the intensive care units. Under the guidance of the preceptor, the resident will provide pharmaceutical care to the patients and drug information to the team. Knowledge of pharmacotherapy in critical care and interpretation of invasive hemodynamic monitoring data will be emphasized.

## Total Parenteral Nutritional Support Team

The resident will attend rounds with a multidisciplinary team which cares for and manages a daily average of 10 patients



receiving total parenteral nutrition. Under the guidance of the preceptor, the resident will write, manage and monitor the parenteral nutrition of the team's patients. The resident will assist in precepting PharmD students.

## Emergency Medicine

The emergency department consists of a 26-bed unit. Residents will participate in direct patient care on a daily basis in conjunction with emergency medicine physicians and nurses. They will assist in medication history documentation, admission order review and pharmaceutical care. In this dynamic setting, residents will develop skills to rapidly review charts, interview and counsel patients, assist in medical emergencies and provide empiric treatment recommendations as well as drug information for a broad range of disease states.

## Patient Safety

The resident will be involved in various areas of medication safety, such as understanding and conducting Root Cause Analysis and Failure Mode and Effects Analysis.



**Missouri Baptist**  
MEDICAL CENTER

**BJC** HealthCare

3015 North Ballas Road • Saint Louis, Missouri 63131 • 314-996-5000 • [MissouriBaptist.org](http://MissouriBaptist.org)





# About the Residency Program

**M**issouri Baptist Medical Center, a 489-bed tertiary care community hospital in the heart of St. Louis County and a member of the nationally renowned BJC HealthCare system, is offering an extraordinary opportunity in a pharmacy practice residency accredited by the American Society of Health-System Pharmacists.

The program provides a unique residency experience at a hospital that has developed a national reputation for its commitment to quality care, safety and excellence. Missouri Baptist was named one of the nation's Top 100 Hospitals® by Thomson Reuters, in its annual study identifying the 100 top U.S. hospitals based on their overall organizational performance.

The pharmacy department provides an extensive spectrum of clinical services, including interdisciplinary patient rounds, nutritional support team, pharmacokinetics, drug information, investigational drug service and involvement in multiple performance improvement committees.

The pharmacy department also utilizes a state-of-the-art medical informatics system that alerts pharmacists regarding medication management.



The department has 40 pharmacists, 40 technicians and four satellite pharmacies, including an oncology/ infusion center and operating room satellites. Utilizing automated dispensing technology, the department serves an average daily census in excess of 250 to 270 inpatients.



**Missouri Baptist**  
MEDICAL CENTER

**BJC** HealthCare

3015 North Ballas Road • Saint Louis, Missouri 63131 • 314-996-5000 • [MissouriBaptist.org](http://MissouriBaptist.org)



# Resident Profiles



## Stephen Butts

PGY-1 Resident 2018- 2019

PharmD, St. Louis College of Pharmacy

The Missouri Baptist PGY1 Residency program is providing me the knowledge and abilities to become the clinical pharmacist I have always desired. I find myself challenged on a daily basis to reach the full capacity of my abilities. Meanwhile, I am in a supportive environment surrounded by professionals that are dedicated to my success. I am being given the opportunities to learn how to seek the answers to complex clinical problems but have resources available to me to make the path to that answer a bit clearer when needed. Upon completion of this program I have no doubt that I will have both the knowledge and capabilities to thrive in any path I choose to take for my career as a clinical pharmacist.

I am absolutely privileged to find myself amongst a team of dedicated and talented pharmacists here at Missouri Baptist. I would highly recommend all individuals seeking residency to consider applying to the Missouri Baptist Medical Center PGY-1 Residency program.



## Meredith Hampton

PGY-1 Resident, 2018-2019

PharmD, St. Louis College of Pharmacy

[Meredith.Hampton@bjc.org](mailto:Meredith.Hampton@bjc.org)

Matching at Missouri Baptist Medical Center was not only a very exciting moment for me, but a huge turning point in my pharmacy career. This program truly exceeds all my expectations for a PGY1 residency, with the perfect balance of challenging yet supportive preceptors at an ever-evolving, top-ranked hospital in St. Louis. One of the many things that drew me to Missouri Baptist during my interview was being surrounded by friendly, welcoming people. This has held true during my residency as each day I have the opportunity to work with inspiring clinical pharmacists and physicians who are truly dedicated to my learning and invested in helping me achieve my career goals. In addition, Missouri Baptist offers a wide range of experiences including unique clinical rotations, research, and opportunities for teaching and precepting pharmacy students. This program provides the perfect platform for me to grow and succeed as a clinical pharmacist, advance my knowledge and experience, and become a valuable member of a multidisciplinary healthcare team.

Missouri Baptist's residency program initially sparked my interest with its well-rounded curriculum. Here, I can build a strong, general foundation in clinical pharmacy that will be valuable and conducive toward any career path. In this program, I am challenged every day to expand my clinical knowledge and think critically. I know that when I complete this residency, I will be prepared to be a well-rounded, independent, and successful practitioner.

My residency at Missouri Baptist Medical Center has been an amazing learning experience and I am so grateful to be a part of such a remarkable and inspirational community of practitioners. I strongly encourage you to consider Missouri Baptist during your residency search and am happy to answer any questions you have regarding the residency program or application process! Please feel free to contact me at [Meredith.Hampton@bjc.org](mailto:Meredith.Hampton@bjc.org) or 314-280-1929.



**Missouri Baptist**  
MEDICAL CENTER

**BJC** HealthCare

3015 North Ballas Road • Saint Louis, Missouri 63131 • 314-996-5000 • [MissouriBaptist.org](http://MissouriBaptist.org)



# *The Clinical* Staff and Faculty

**Thomas G. Hall, PharmD, BCPS, FASHP**

Pharmacy Director  
PharmD: University of Texas  
Residency: Truman Medical Center, Kansas City

**Laura Veltri Hamann, PharmD, BCPS**

Clinical Pharmacy Specialist,  
Residency Program Director  
PharmD: Creighton University  
Residency: Barnes-Jewish Hospital, St. Louis

**Dennis Bouselli, PharmD**

Pharmacy Clinical Manager  
PharmD: University of Arkansas

**Brian Lee, PharmD, BCPS, BCCCP**

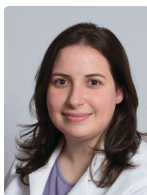
Clinical Pharmacy Specialist  
PharmD, University of Missouri Kansas City  
Residency: Missouri Baptist Medical Center,  
St. Louis

**Amanda R. Buckallew, PharmD, BCPS**

Clinical Pharmacy Specialist  
PharmD: University of Missouri Kansas City  
Residency: Missouri Baptist Medical Center,  
St. Louis

**Anastasia Armbruster, PharmD, BCPS**

Clinical Pharmacy Specialist  
PharmD: St. Louis College of Pharmacy  
Pharmacy Practice Residency: West Virginia  
University Hospitals, Morgantown, WV  
Internal Medicine Residency: St. Louis  
VAMC - John Cochran Division, St. Louis

**Naomi Barasch, PharmD, MHA, BCPS**

Clinical Pharmacy Specialist  
PharmD: Drake University  
Residency: Missouri Baptist Medical Center,  
St. Louis

**Shane Austin, PharmD, BCPS**

Clinical Pharmacy Specialist  
PharmD: St. Louis College of Pharmacy  
Pharmacy Practice Residency:  
SSM Health St. Mary's Hospital  
Internal Medicine Specialty Residency:  
VA St. Louis Health Care System

**Katie Teller, PharmD, BCPS**

Clinical Pharmacy Specialist  
PharmD: Drake University  
Pharmacy Practice Residency: St. Luke's  
Hospital, Chesterfield, MO  
Internal Medicine Specialty Residency:  
St. Luke's Hospital, Chesterfield, MO

**Natalie Freiburger, PharmD, BCPS**

Clinical Pharmacist  
PharmD: University of Missouri Kansas City  
Residency: Missouri Baptist Medical Center,  
St. Louis



**Missouri Baptist**  
MEDICAL CENTER

**BJC** HealthCare

3015 North Ballas Road • Saint Louis, Missouri 63131 • 314-996-5000 • [MissouriBaptist.org](http://MissouriBaptist.org)



# Missouri Baptist “Points of Pride”



✱ Missouri Baptist Heart Center’s team of four cardiothoracic surgeons, 28 cardiologists and electrophysiologists, and specially trained healthcare professionals specializes in the prevention, diagnosis, treatment and rehabilitation of heart disease. More heart surgeries and more cardiac cath procedures were performed at the Missouri Baptist Heart Center’s during the last five years than at any other St. Louis County hospital.

✱ The medical and radiation oncologists, nurses, social workers and clinical professionals in the Missouri Baptist Cancer Center provide screening and early detection, diagnosis, intervention and rehabilitation for oncology and hematology patients.

✱ The Digestive Disease Center offers a full range of diagnostic and interventional endoscopy services for inpatients and outpatients experiencing gastrointestinal or pulmonary disease.

✱ The Ortho/Neuro/Spine Program provides education, physical therapy, rehabilitation, drug therapies and surgical intervention programs designed to meet the needs of its orthopedic patients.

✱ The Clinical Nursing Institute at Missouri Baptist has been a valued resource helping to develop expert, compassionate nurses who are passionate about service excellence at Missouri Baptist. Thousands of nurses and other healthcare professionals have participated in courses, workshops or seminars offered at the CNI.



✱ Missouri Baptist Medical Center provides numerous health fairs, screenings and educational programs, which offer wellness and prevention tips to the St. Louis community. These include the annual Missouri Baptist Heart Center Heart Fair, and “Pearls of Wisdom,” which addresses women’s health issues.

✱ Numerous Missouri Baptist physicians and specialists have provided diagnosis and treatment for hundreds of patients in Missouri and Illinois communities whose hospitals comprise the Missouri Baptist Rural Outreach Program.



**Missouri Baptist**  
MEDICAL CENTER

**BJC** HealthCare

3015 North Ballas Road • Saint Louis, Missouri 63131 • 314-996-5000 • [MissouriBaptist.org](http://MissouriBaptist.org)





# About Missouri Baptist Medical Center

**F**rom our convenient location at the crossroads of St. Louis County, Missouri Baptist Medical Center has secured a reputation as one of the top hospitals in the area. Thousands of residents from metropolitan St. Louis, Missouri and Illinois, and across the nation choose Missouri Baptist each year for the quality medical services provided here, driven by our mission to improve the health of the communities we serve.

From our humble beginnings in 1884 in the home of Dr. William Mayfield, Missouri Baptist Medical Center has grown into the existing campus located on Ballas Road near the intersection of I-270 and Hwy. 40 (I-64) — a facility licensed for 489 beds, with four adjacent medical office buildings.



With more than 1,117 physicians on staff and more than 2,613 employees, Missouri Baptist provides a full spectrum of medical and surgical services, with specialization in cardiac and vascular services, oncology, ortho/neuro/spine, digestive diseases, and obstetrics.

Missouri Baptist is a member of BJC HealthCare, one of the nation's largest healthcare organizations, employing nearly 26,000 individuals in greater St. Louis, southern Illinois and mid-Missouri. Through its network of 15 hospitals and other health-service organizations, BJC provides a full continuum of services.



Since becoming a member of BJC in 1994, Missouri Baptist has further developed key services and witnessed phenomenal growth. In 2017, the hospital provided care for 20,171 inpatient admissions, 42,374 emergency room visits and 9,825 outpatient surgery visits.

Missouri Baptist has consistently ranked as a top Missouri hospital for cardiac surgery and cardiac care, ranked by *U.S. News & World Report* as one of the top hospitals in the region, and a member of Heartland Cancer Research, one of 40 consortia granted the prestigious Community Oncology Research Organization (NCORP) designation by the National Cancer Institute.

In 2016, Missouri Baptist Medical Center was named a Magnet® hospital by the American Nurses Credentialing Center (ANCC). The prestigious designation is the highest credential a healthcare organization can receive for nursing excellence and quality patient care. Only about 400 out of nearly 6,000 U.S. hospitals have achieved Magnet recognition.



**Missouri Baptist**  
MEDICAL CENTER

**BJC** HealthCare

3015 North Ballas Road • Saint Louis, Missouri 63131 • 314-996-5000 • [MissouriBaptist.org](http://MissouriBaptist.org)



# *Welcome to* **St. Louis**

**W**elcome to St. Louis, home of the Gateway Arch. The metropolitan area offers a wide variety of cultural and recreational opportunities, and because Missouri Baptist Medical Center sits at the intersection of two of the city's major highways (I-270 and I-64), you will be 15-20 minutes from almost everything.

St. Louis features more than 20 institutions of higher learning, as well as libraries, museums, professional drama and opera theaters, a dance company and the second-oldest symphony orchestra in the United States.

St. Louis is home to the St. Louis Cardinals baseball team, and the St. Louis Blues hockey team, as well as several minor league teams in a variety of sports.

A more recent world-class attraction, the World Chess Hall of Fame is located in the bustling Central West End neighborhood near Forest Park, and recently hosted the international Grand Chess Tour.

One of the city's major attractions is Forest Park, the site of the 1904 World's Fair. In addition to the many athletic and recreational opportunities at the park, Forest Park is home to the St. Louis Zoo, the St. Louis Science Center, the St. Louis Art Museum and the Missouri Historical Society.

## **Other attractions and events include:**

- University City's Delmar Loop
- The Fabulous Fox Theater
- The Pageant
- Missouri Botanical Garden
- Contemporary Art Museum of St. Louis
- St. Louis Art Fair
- The Great Forest Park Balloon Race
- Six Flags – St. Louis
- Grant's Farm



**Missouri Baptist**  
MEDICAL CENTER

**BJC** HealthCare

3015 North Ballas Road • Saint Louis, Missouri 63131 • 314-996-5000 • [MissouriBaptist.org](http://MissouriBaptist.org)